

BLOCK 87  
PORT SEWALL  
PLAT BOOK 3 PAGE 8  
PALM BEACH (NOW MARTIN) COUNTY  
FLORIDA

# GILLESPIE'S MINOR PLAT

A RESUBDIVISION OF LOTS 4 & 5, BLOCK 85, PORT SEWALL, ACCORDING TO THE REVISED OFFICIAL MAP OF SEWALL'S POINT LAND COMPANY, FILED NOVEMBER 18, 1913 AND RECORDED IN PLAT BOOK 3, PAGE 8, PUBLIC RECORDS OF PALM BEACH (NOW MARTIN) COUNTY, FLORIDA.

### CLERK'S RECORDING CERTIFICATE

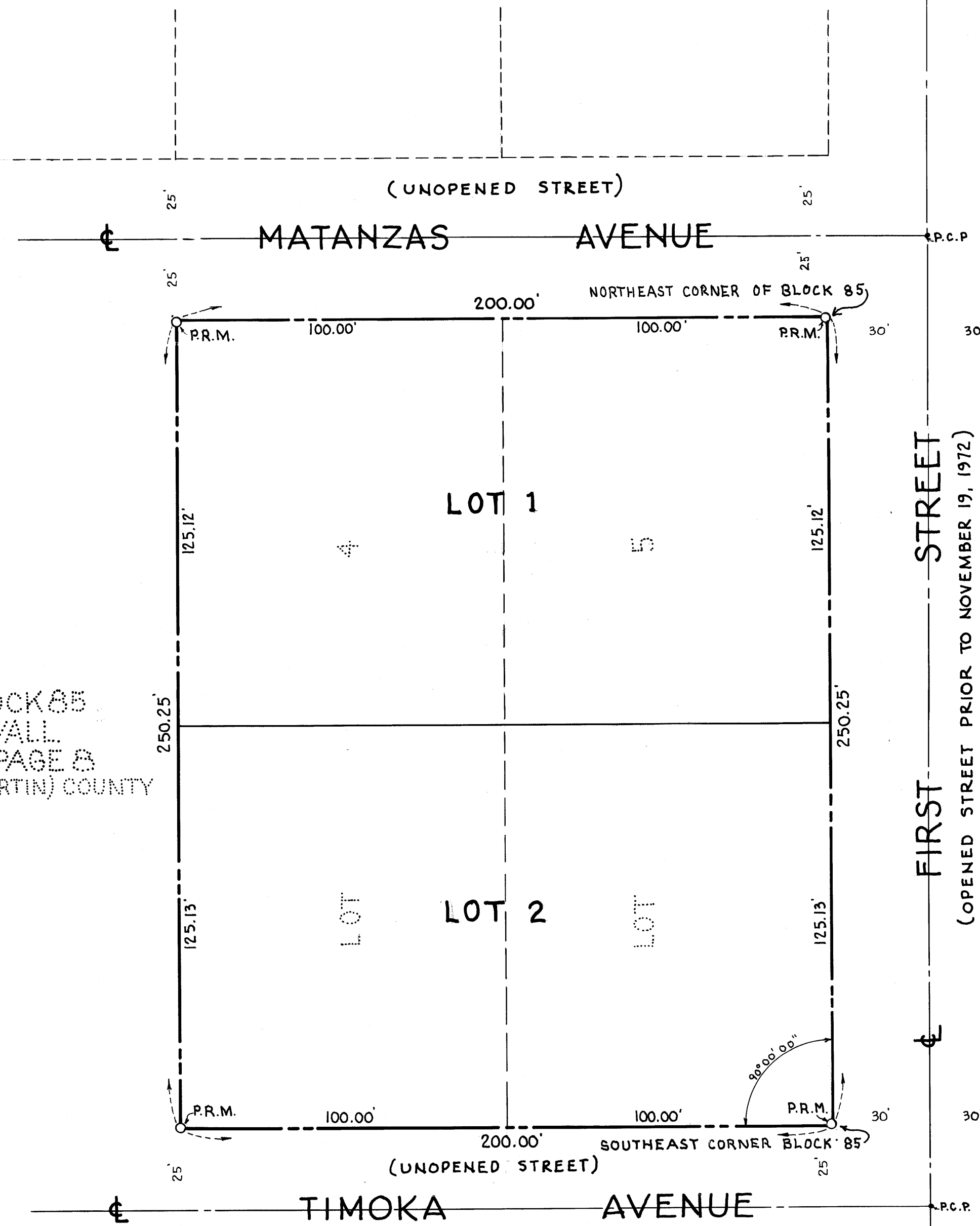
I, LOUISE V. ISAACS, CLERK OF THE CIRCUIT COURT OF MARTIN COUNTY, FLORIDA, HEREBY CERTIFY THAT THIS PLAT WAS FILED FOR RECORD IN PLAT BOOK 5, PAGE 66, MARTIN COUNTY, FLORIDA, PUBLIC RECORDS, THIS 19<sup>th</sup> DAY OF April, 1973.

LOUISE V. ISAACS, CLERK  
CIRCUIT COURT  
MARTIN COUNTY, FLORIDA

BY: *Kathryn*  
DEPUTY CLERK

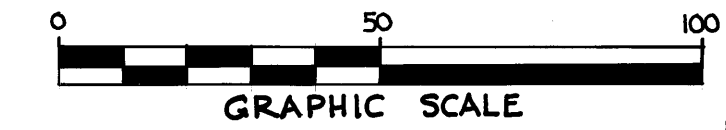
FILE NO:  
191195

LOUISE V. ISAACS  
CLERK OF CIRCUIT COURT  
MARTIN COUNTY, FLORIDA



LOT 3 BLOCK 85  
PORT SEWALL  
PLAT BOOK 3 PAGE 8  
PALM BEACH (NOW MARTIN) COUNTY  
FLORIDA

BLOCK 81  
PORT SEWALL  
PLAT BOOK 3 PAGE 8  
PALM BEACH (NOW MARTIN) COUNTY  
FLORIDA



SCALE: 1" = 30'

DATE: APRIL 13, 1973

### DESCRIPTION

A RESUBDIVISION OF LOTS 4 AND 5, BLOCK 85, PORT SEWALL, ACCORDING TO THE REVISED OFFICIAL MAP OF SEWALL'S POINT LAND COMPANY, FILED NOVEMBER 18, 1913 AND RECORDED IN PLAT BOOK 3, PAGE 8, PUBLIC RECORDS OF PALM BEACH (NOW MARTIN) COUNTY, FLORIDA.

### CERTIFICATE OF OWNERSHIP

PATRICIA ANN GILLESPIE, AN UNMARRIED WOMAN, DOES HEREBY CERTIFY THAT SHE IS THE OWNER OF THE PROPERTY DESCRIBED HEREON.

DATED THIS \_\_\_\_\_ DAY OF APRIL, 1973

*Patricia Ann Gillespie*  
PATRICIA ANN GILLESPIE

### TITLE CERTIFICATE

I, THOMAS H. THURLOW, JR., A MEMBER OF THE FLORIDA BAR, HEREBY CERTIFY THAT APPARENT RECORD TITLE TO THE LAND DESCRIBED AND SHOWN ON THIS PLAT IS IN THE PERSON WHICH EXECUTED THE CERTIFICATE OF OWNERSHIP HEREON. ALL MORTGAGES NOT SATISFIED OR RELEASED OF RECORD ENCUMBERING THE LAND DESCRIBED HEREON ARE AS FOLLOWS: MORTGAGOR: PATRICIA ANN GILLESPIE, AN UNMARRIED WOMAN, MORTGAGEE: THOMAS H. THURLOW, JR., AS TRUSTEE, DATE OF MORTGAGE: OCTOBER 27, 1972, RECORDED IN OFFICIAL RECORD BOOK 346, PAGE 1180 OF THE PUBLIC RECORDS OF MARTIN COUNTY, FLORIDA.

*Thomas H. Thurlow, Jr.*  
THOMAS H. THURLOW, JR. ATTORNEY-AT-LAW  
1<sup>st</sup> NATIONAL BANK BUILDING  
STUART, FLORIDA 33494

### SURVEYOR'S CERTIFICATE

I, MAX O. PEABODY, JR., DO HEREBY CERTIFY THAT THIS PLAT OF "GILLESPIE'S MINOR PLAT," A RESUBDIVISION OF LOTS 4 AND 5, BLOCK 85, PORT SEWALL, ACCORDING TO THE REVISED OFFICIAL MAP OF SEWALL'S POINT LAND COMPANY, FILED NOVEMBER 18, 1913 AND RECORDED IN PLAT BOOK 3, PAGE 8, PUBLIC RECORDS OF PALM BEACH (NOW MARTIN) COUNTY, FLORIDA, IS A TRUE AND CORRECT REPRESENTATION OF THE LANDS SURVEYED, THAT THE SURVEY WAS MADE UNDER MY SUPERVISION, AND THAT THE SURVEY DATA COMPLIES WITH ALL OF THE REQUIREMENTS OF CHAPTER 177, FLORIDA STATUTES.

*Max O. Peabody, Jr.*  
MAX O. PEABODY, JR.  
FLORIDA SURVEYOR REGISTRATION NO. 915

### APPROVAL OF COUNTY

THIS PLAT IS HEREBY APPROVED BY THE UNDERSIGNED ON THE DATE OR DATES INDICATED.

DATE: April 18, 1973

*L. R. ...*  
COUNTY ENGINEER

DATE: April 18, 1973

*Stephen B. ...*  
COUNTY ATTORNEY

DATE: Apr. 18, 1973

*T. Leonard*  
DIRECTOR

PLANNING AND ZONING COMMISSION  
MARTIN COUNTY, FLORIDA

NOTE  
O- P.R.M. = DENOTES PERMANENT REFERENCE MONUMENTS  
+ P.C.P. = DENOTES PERMANENT CONTROL POINTS

PREPARED BY  
**ROGERS - PEABODY, INC.**  
CONSULTING ENGINEERS & LAND SURVEYORS  
508 COLORADO AVENUE STUART, FLORIDA  
PH. (805) 287-5428 STUART, FLORIDA OR (805) 465-0505 FT. PIERCE, FLORIDA